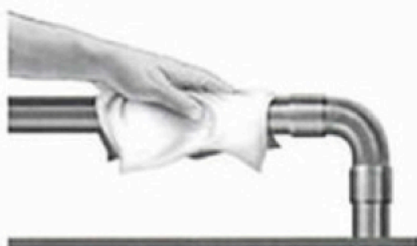


## Installation tips

①



Clean all dust, dirt, oil from pipework where necessary. Install Armaflex when ambient temperature is between +4 and +38°C

②



Open pre-slit Armaflex and snap onto pipe (release paper is still protecting the self-adhesive strip).

③



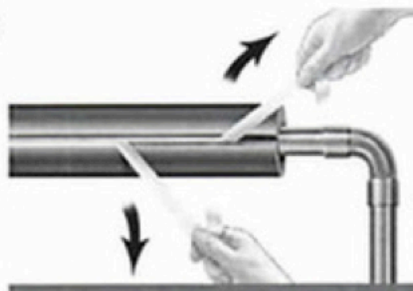
Adjust fitted Armaflex to ensure slit is easily accessible.

④



Locate the end of the yellow release film for the self-seal strip.

⑤



Remove the yellow protection plastic strip on both sides by drawing it away from the insulation.

⑥



Close the slit seam and squeeze together with firm pressure, to ensure a permanent seal.

⑦



Push The Armaflex along the pipe using a circular motion. **Do not pull the insulation.**

⑧



Using a circular motion, push the Armaflex around bends. **Do not pull the insulation.** On tight radius bends use mitre-cut sections.

⑨



Seal All joints with Armaflex Adhesive. **Do not stretch when sealing joints.**

FR/Armaflex® SELF-SEAL pipe insulation can be snapped over piping already connected. Bends of tight radius should be fitted with mitre-cut sections. Butt joints are to be sealed with one of our Armaflex adhesives: Armaflex 520 or, where a low VOC adhesive is required, Armaflex 520 low-VOC. Armaflex adhesives are contact adhesives, therefore, and in all cases both the surfaces to be joined must be coated with adhesive.

FR/Armaflex® SELF-SEAL is designed for installation above ground. FR/Armaflex® normally requires no supplemental vapour retarder protection, but additional vapour-retarder protection may be necessary when installed on very low temperature piping or exposure to continually high humidity conditions. A protective finish is to be applied and ArmaTuff or Armafinish is recommended.

Armaflex insulation products must be installed according to "Armaflex Application Manual". Proper installation is required to ensure Armaflex insulation performance. Before starting, the temperature of the air and of the insulation should be between 4°C and 38°C at the time of installation.

*Note: FR/Armaflex® SELF-SEAL features an advanced pressure sensitive adhesive (PSA) system for tight bonds. However, any factory applied PSA is susceptible to losing tack and hence loss of adhesion properties if left unused for a prolonged period. For best results, Armacell recommends applying Armaflex self seal products within one year of lamination date.*