

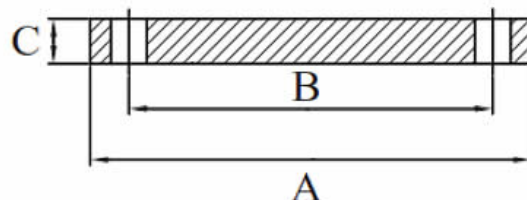
# STAINLESS STEEL FLANGES 316

## How to Size Your Flange

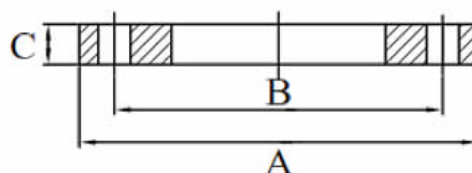
If you are not sure how to match an existing flange, simply supply us with the details listed below and we can size it for you....

- The outside diameter of the flange
- The hole centre distance across the radius (PCD)
- The thickness of the flange
- The number of bolt holes
- The bolt diameter

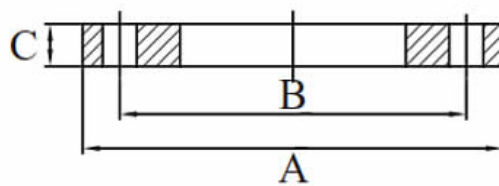
Stainless Steel Table 'E' Blind Flanges 316/316L								
AAP CODE	IMPERIAL SIZE	A	B	C	BOLT SIZE	HOLE DIAMETER	NO. HOLES	APPROX KG/PC
SSFBE31625	1	115	83.0	10.6	M12	14	4	0.6
SSFBE31632	1 1/4	120	87.0	10.6	M12	14	4	0.7
SSFBE31640	1 1/2	135	98.0	10.6	M12	14	4	1.0
SSFBE31650	2	150	114.0	10.6	M16	18	4	1.4
SSFBE31655	2 1/2	165	127.0	10.6	M16	18	4	1.7
SSFBE31680	3	185	146.0	11.6	M16	18	4	2.4
SSFBE31694	4	215	178.0	14.0	M16	18	8	3.7
SSFBE31696	6	280	235.0	17.5	M20	22	8	8.0
SSFBE31698	8	335	292.0	20.0	M20	22	8	13.0



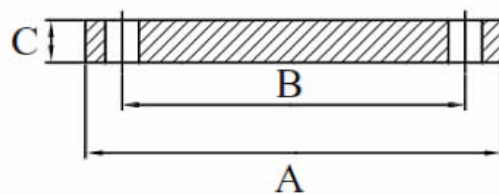
Stainless Steel Table 'D' Slip On 316/316L								
AAP CODE	IMPERIAL SIZE	A	B	C	BOLT SIZE	HOLE DIAMETER	NO. HOLES	APPROX KG/PC
SSFSD31694	4	215	178	10.6	M16	18	4	2.1
SSFSD31696	6	280	235	17.5	M16	18	8	3.92
SSFSD31698	8	335	292	20.0	M16	18	8	5.24
SSFSD316X25	10	406	356	16	M20	22	8	8.68



Stainless Steel Table 'E' Slip On 316/316L								
AAP CODE	IMPERIAL SIZE	A	B	C	BOLT SIZE	HOLE DIAMETER	NO. HOLES	APPROX KG/PC
SSFSE31625	1	115	83	10.6	M12	14	4	0.5
SSFSE31632	1 1/4	120	87	10.6	M12	14	4	0.6
SSFSE31640	1 1/2	135	98	10.6	M12	14	4	0.9
SSFSE31650	2	150	114	10.6	M16	18	4	1.1
SSFSE31665	2 1/2	165	127	10.6	M16	18	4	1.3
SSFSE31680	3	185	146	11.6	M16	18	4	1.8
SSFSE31694	4	215	178	14.0	M16	18	8	2.6
SSFSE31696	6	280	235	17.5	M20	22	8	4.9
SSFSE31698	8	335	292	20.0	M20	22	8	7.5

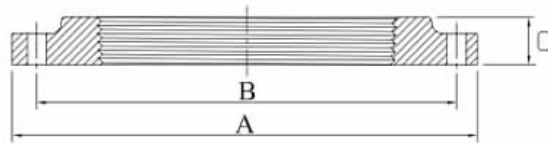


Stainless Steel Table 'D' Blind Flanges 316/316L								
AAP CODE	IMPERIAL SIZE	A	B	C	BOLT SIZE	HOLE DIAMETER	NO. HOLES	APPROX KG/PC
SSFBD31694	4	215	178	10.6	M16	18	4	3.0
SSFBD31696	6	279	235	13	M16	18	8	6.49
SSFBD31698	8	337	292	13	M16	18	8	9.28
SSFBD316X25	10	406	356	16	M20	22	8	16.14



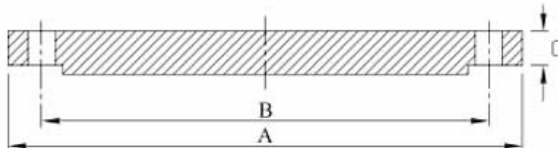
**Stainless Steel Table "E" BSP Flange 316/316L**

AAP CODE	IMPERIAL SIZE	A	B	C	BOLT SIZE	HOLE DIAMETER	NO. HOLES	APPROX. KG/PC
SSFEBSP31615	1/2	95.3	66.7	15.8	M12	14	4	0.34
SSFEBSP31620	3/4	101.6	73.0	17.4	M12	14	4	0.45
SSFEBSP31625	1	114.3	82.6	18.2	M12	14	4	0.57
SSFEBSP31632	1 1/4	120.7	87.3	19.0	M12	14	4	0.79
SSFEBSP31640	1 1/2	133.3	98.4	21.4	M12	14	4	1.02
SSFEBSP31650	2	152.4	114.3	22.2	M16	18	4	1.36
SSFEBSP31665	2 1/2	165.1	127.0	26.2	M16	18	4	1.7
SSFEBSP31680	3	184.1	146.0	27.0	M16	18	4	2.27
SSFEBSP31694	4	215.9	177.8	32.7	M16	18	8	3.18



**Stainless Steel C150 Flange 316/316L**

AAP CODE	IMPERIAL SIZE	A	B	C	BOLT SIZE	HOLE DIAMETER	NO. HOLES	APPROX. KG/PC
SSFB15031625	1	108	79.3	14.5	1/2	16	4	0.9
SSFB15031640	1 1/2	127.1	98.4	17.5	1/2	16	4	1.8
SSFB15031650	2	152.5	120.6	19.1	5/8	20	4	2.3
SSFB15031680	3	190.6	152.4	23.8	5/8	20	4	4.1
SSFB15031694	4	228.7	190.5	23.8	5/8	20	8	7.7
SSFB15031696	6	276.5	241.3	25.5	3/4	22	8	12



Stainless Steel C150 RF Flange 316/316L								
AAP CODE	IMPERIAL SIZE	A	B	C	BOLT SIZE	HOLE DIAMETER	NO. HOLES	APPROX. KG/PC
SSFS15031620	3/4	98.5	69.8	15.9	1/2	16.0	4	0.7
SSFS15031625	1	108.0	79.3	17.5	1/2	16.0	4	0.9
SSFS15031640	1 1/2	127.1	98.4	22.3	1/2	16.0	4	1.4
SSFS15031650	2	152.5	120.6	25.5	5/8	20.0	4	2.3
SSFS15031680	3	190.6	152.4	30.2	5/8	20.0	4	3.6
SSFS15031694	4	228.7	190.5	33.4	5/8	20.0	8	5.9
SSFS15031696	6	279.5	241.3	39.7	3/4	22.0	8	8

