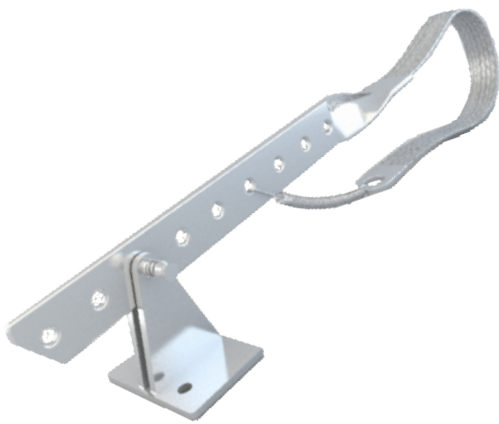


Shaft Grounding Strap

Brierley Marine Chandlery
Hobart: 6273 4278
Launceston: 6337 8466



Features:

- ✓ Spring tension for easy installation and use
- ✓ Unmatched surface area connection to shafts
- ✓ Tinned copper braid strap & back up bonding connection.
- ✓ 316 marine grade stainless steel pivot arm and mount
- ✓ 11 positioning holes to suit most drive shafts
- ✓ Spring loaded locking pins for easy adjustment

Description:

Product Code: MPS-SS07

The MPS Shaft Grounding Strap uses the highest quality marine grade stainless steel and tinned copper braid in a unique design that maximises the connection to a vessels drive shaft(s).

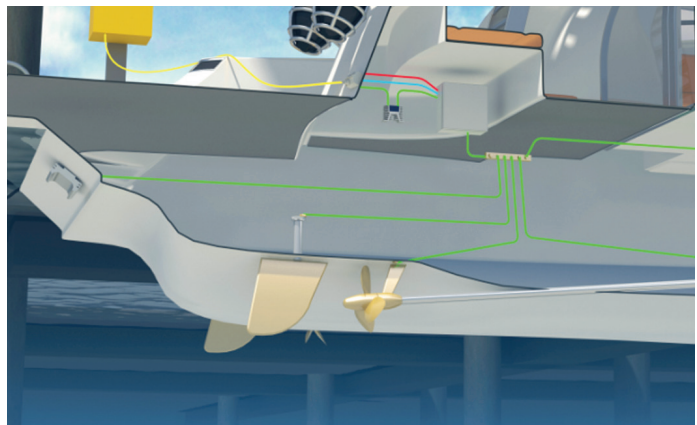
The unit is easy to install and service and has very few moving parts. The non-cutting lubricant supplied resists shaft scoring and the unit can be retro fitted at any time or installed by a vessel manufacturer.

- ✓ Proper fitting of an MPS Shaft Grounding Strap negates the use for shaft anodes when fitted as part of a Vessel Bonding System.

Vessel Bonding Systems:

A Vessel Bonding System connects each of the submerged metal parts allowing their individual electrochemical potential to be grounded/earthed via a circuit.

The Shaft Grounding Strap maintains an earth connection between shafts, propellers and the bonding circuit. All other Through Hull Fittings are also connected including the Maddox anode.





Installation Instructions:

Shaft Grounding Strap should only be installed by persons competent in fitting, maintenance or repair of marine vessels.

- ✓ Ensure all component parts are available.
- ✓ Find a location on the exposed stainless steel shaft which is free from any rotating parts or couplings and in close proximity to a suitable hull or other mounting location.
- ✓ Clean the shaft with a dry soft cloth to remove any residual material.
- ✓ Wrap the braided strap over the shaft in the same direction as the shaft rotation when in drive.
- ✓ Ensure the strap is not over tightened. Strap should have greater than 50% connection to the circumference of the shaft.
- ✓ Mark the hull through the holes in the hull mounting bracket.
- ✓ Drill and secure the hull mounting bracket. Use a flexible adhesive to help secure the screws.
- ✓ Apply petroleum jelly supplied to lubricate the shaft strap. Do not use lubricants containing cutting agents such as marine grease or oil.
- ✓ Attach spring provided in to one of the 11 available holes to allow slack tension to the strap (see MPS website).
- ✓ Connect one end of the bonding wire (included) to the end eyelet of the shaft strap with the nuts, washer and bolt provided.

- ✓ Connect the other end of the bonding wire to the hull mount via the spring loaded locking pin.
- ✓ Ensure connection to the greater Vessel Bonding System.
- ✓ Attach the installation and warranty tag to another spare hole on the strap bar.

MPS recommend that the Shaft Grounding Strap be tested for connection by a qualified Marine Electrician using the MPS CP Monitoring and Test Kit.

Maintenance Instructions:

- ✓ A visual inspection of the strap should be carried out regularly and lubricant re-applied during periods of frequent use and/or after bilge clean and mechanical maintenance.
- ✓ Fitting or maintenance not in accordance with MPS recommendations will void any product warranty.

Contact Information

Brierley Marine Chandlery
Hobart: 6273 4278
Launceston: 6337 8466